

ARCHITECTURAL DIGEST

REAL ESTATE

This \$28.5 Million Penthouse Is Located in SoHo's Tallest Residential Building

The triangular design is just one feature that makes this high-rise special

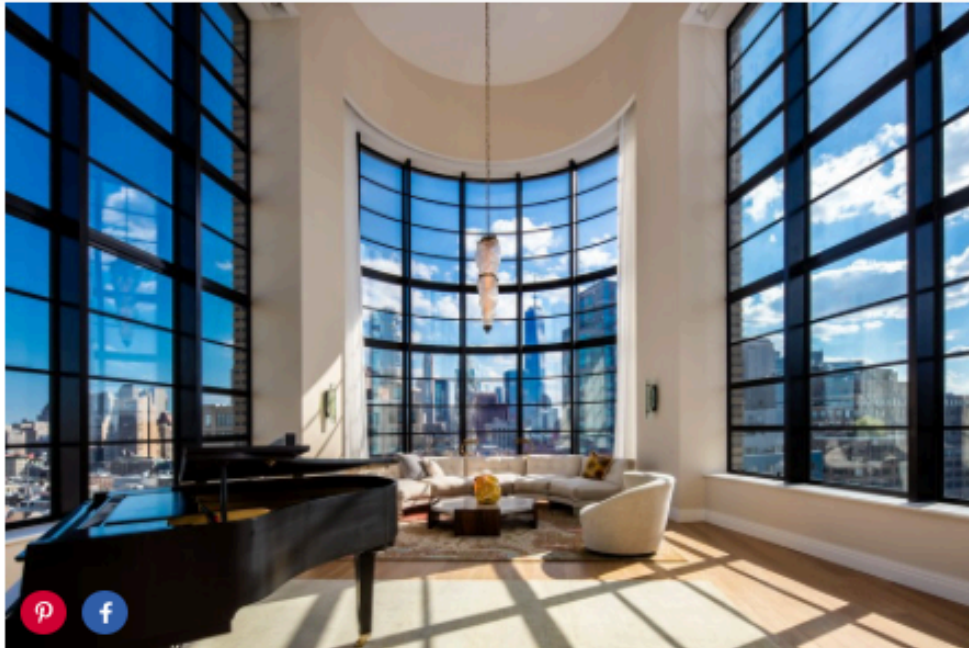
TEXT BY [JENNIFER TZESES](#) · PHOTOGRAPHY BY [EVAN JOSEPH](#) · Posted September 6, 2016

Designed by architect Cary Tamarkin, this recently completed Manhattan duplex penthouse boasts 360-degree views of the Empire State Building, [One World Trade Center](#), and Hudson River Park. Located between Broome and Spring streets on Sullivan, the sprawling penthouse offers over 5,000 square feet of living space on the top two floors of the tallest residential building in the area. The home's defining features are soaring multipaned casement windows that rise 23 feet and curve on the southernmost side. There's a massive great room with staggering views in every direction, a chef's kitchen with [marble counters](#), a den, a parlor, and a 404-square-foot wraparound corner terrace. The upper floor houses the master suite and additional bedrooms. The real jewel of the space is its 978-square-foot rooftop terrace, where the city views are unparalleled. Listed for \$28.5 million, this 5,505-square-foot home has 5 bedrooms, 5 baths, and 2 half baths. Contact: Douglas Elliman, 212.891.7104; [10sullivan.com](#)

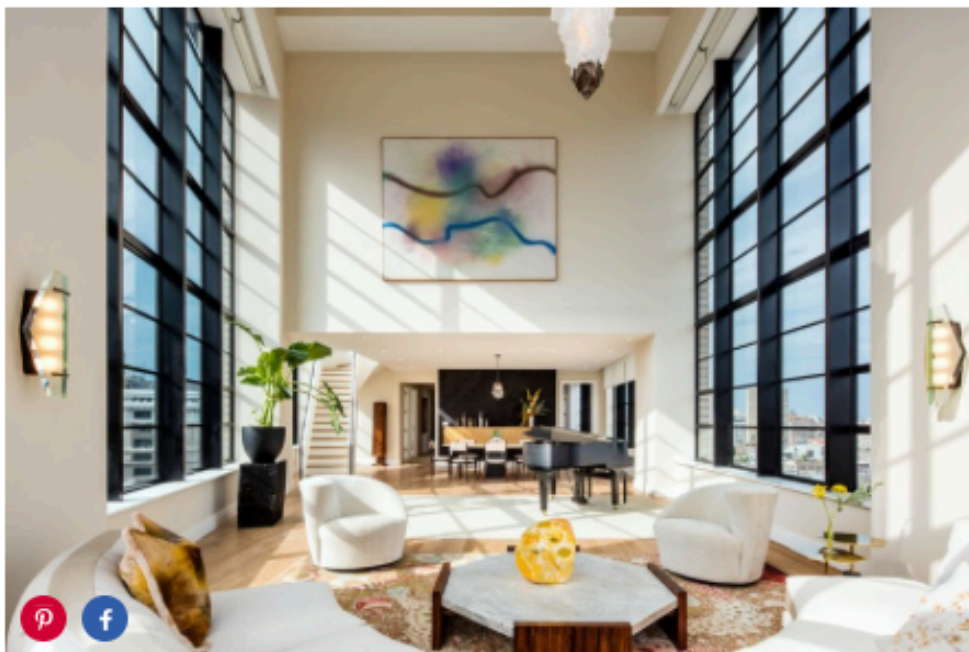


The soaring glass tower has a unique triangular profile [↗](#)

Double-height casement windows frame the expansive great room.



A view from the opposite end of the great room.



There's a central island in the spacious kitchen.



The roomy formal dining area.



There's no better place to enjoy the views than the rooftop terrace.

